

## THE ALDERLEY DENTAL CHILDREN'S PLAN

Our aim is to provide high quality care and treatment in a relaxed, comfortable and safe environment. We are committed to continuing education and keeping abreast of advances in modern dentistry. Tooth decay is one of the most common preventable diseases and to prevent it requires a commitment of time and effort. With the correct habits, there is no reason why your child should not have healthy teeth for life. Research shows that preventive dentistry delivered on a regular basis greatly reduces the risk of dental disease in children and provides a platform for a lifetime of improved oral health.

Our children's plan focuses on the delivery of preventive dentistry on a regular basis, encouraging good diet and oral health habits in your child's formative years and thereby minimising the need for fillings and extractions.

When you enrol your child onto our children's plan, you will have the peace of mind that all your child's preventive dental care will be covered by convenient monthly payments. Our plan also provides worldwide Supplementary Insurance for dental emergencies or dental injuries whilst at home or abroad (see overleaf) – essential cover for the rough and tumble of childhood.



### YOUR CHILD'S BENEFITS

- the cost of your child's preventive dental care is included
- payment by convenient monthly Direct Debit, allowing you to budget
- guaranteed registration with the practice and continuing access to your child's dentist
- no need for an assessment – you can enrol your child immediately
- early identification of dental problems to prevent pain, discomfort and inconvenience
- appointment times to suit your child whenever possible
- priority bookings in the event of a dental emergency
- discount on treatment fees
- access to a fun and interactive children's dental health web site: [www.gr8smileclub.com](http://www.gr8smileclub.com)
- access to a 24 hour dental emergency helpline 365 days per year
- worldwide Supplementary Dental Injury and Emergency Insurance at terms not available elsewhere (see overleaf).

### WHO IS OUR CHILDREN'S PLAN FOR?

Our plan is designed for those parents or guardians who wish their children to participate in a regular preventive care programme and to budget on a monthly basis.

### WHAT DOES OUR CHILDREN'S PLAN INCLUDE?

**For children aged 6 - 14 years our plan costs £9.33 per month and covers:**

- two dental health examinations per year
- small x-rays
- 15% discount on treatment fees
- choice of appointment hours outside school times
- fissure sealants
- diet and oral hygiene advice
- membership card with 24 hour helpline numbers for dental emergencies at home or abroad
- worldwide Supplementary Insurance (see overleaf).

**For children aged 15 - 18 years our plan costs £10.25 per month and covers:**

- two dental health examinations per year
- small x-rays
- 15% discount on treatment fees
- choice of appointment hours outside school times
- sports gum shield at laboratory cost
- diet and oral hygiene advice
- membership card with 24 hour helpline numbers for dental emergencies at home or abroad
- worldwide Supplementary Insurance (see overleaf).

Treatment not covered by this plan can be paid for separately.

### HOW DO YOU ENROL YOUR CHILD ONTO OUR CHILDREN'S PLAN?

There is no need for an assessment. All you have to do is complete a registration form and Direct Debit mandate on behalf of your child.

In addition to your first monthly payment, an initial registration fee of £10 per child will be charged and will be included in your first Direct Debit payment.

If you choose to cancel your child's plan for any reason you can do so by simply giving us one month's notice.

### ANY QUESTIONS?

If you have any questions about our children's plan, please contact our reception team who will be happy to provide further information and guidance.

### WHAT HAPPENS IN AN EMERGENCY?

You will have access to a 24 hour, 365 day worldwide dental emergency helpline, which will endeavour to find an English speaking dentist to assist you.

Alderley Dental

## WHAT DOES THE SUPPLEMENTARY INSURANCE COVER?

### Your Supplementary Insurance provides:

- ✓ cover for:
  - up to £10,000 worth of treatment following dental injury
  - temporary emergency treatment whilst away from home in the UK or abroad (up to the limits specified)
  - the call-out fee charged by a dentist opening their surgery to treat you in an emergency (up to the limits specified)
- ✓ hospital cash benefit if under the care of an oral/maxillofacial surgeon
- ✓ cash benefit if diagnosed with oral cancer
- ✓ 24 hour access to a worldwide emergency helpline

The Supplementary Insurance is designed to cover the cost of **temporary emergency treatment whilst you are away from home** and therefore excludes the cost of emergency treatment carried out by your own dentist, a rota dentist, or any other dentist within a 15 mile radius of your practice. However, call-out fees charged by any dentist to open their surgery (including your own dentist) are recoverable up to policy limits.

In the event of a dental injury, treatment carried out by any dentist (including your own dentist) is covered up to policy limits.

Please refer to the Policy Summary and Important Information leaflet and the Policy for full details of the benefits, terms, conditions and exclusions.

*Terms within this brochure subject to change without notice.*

82300-0510-PPmaBch-v0310-stw12

### Dentists

**Dr A R McD Hannah BChd MFGDP (UK)**  
**Dr D S McD Hannah BChd MFGDP (UK)**

### Contact

Alderley Dental Practice  
79 London Rd  
Alderley Edge  
SK9 7DY

**Telephone: 01625 583311**

web: [www.alderleydental.co.uk](http://www.alderleydental.co.uk)

### Opening Hours

Monday to Thursday 9.00am - 6.00pm  
Friday 9.00am - 1.00pm

### Emergencies

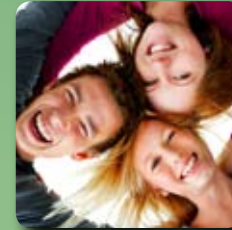
**07940 396317**

**Away from home helpline:**

(UK) 0800 525631

(Abroad) +44 1747 820841

## Alderley Dental Practice Children's Plan



# Alderley Dental

# Alderley Dental